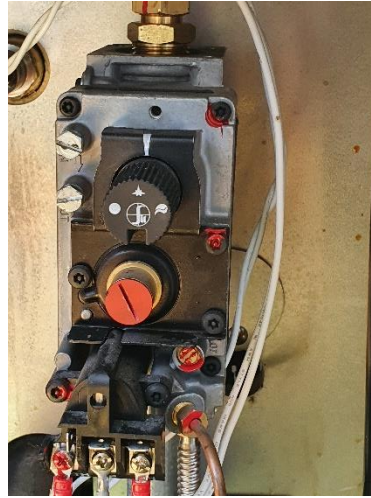


Gas Fryer Ignition Instructions

1. Open the gas bottle. Ensure ignition knob is set to pilot star symbol. Push and hold knob down to draw gas through.



2. Locate pilot light hole. Use long reach lighter through the pilot hole to ignite the pilot light. Alternatively, if no long-reach lighter is available light from underneath. This step may take a minute or two.



3. Once the pilot light has ignited, turn ignition knob to flame symbol and adjust temperature knob to desired temperature.

